



KEEP EXPLORING EXCELLENCE

Contact US

Website: www.aicgear.com

Email: sales@aicgear.com

Address: 2837 Diamond Bar Blvd, Diamond Bar, CA 91765



Introduction of Acorn Industrial Corporation



GF SERIES PARALLEL-SHAFT
HELICAL GEAR MOTORS



GK SERIES HELICAL-BEVEL
GEAR MOTORS



GR SERIES HELICAL
GEAR MOTORS



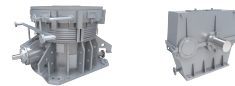
GS SERIES HELICAL-WORM
GEAR MOTORS



CYCLOIDAL REDUCER



GMLX(S), GMY(X)&MBJ
SPECIAL MILL REDUCER



PV SERIES UNIVERSAL
GEAR BOX



ZLYJ PLASTIC AND RUBBER
SPECIAL REDUCER



GX SERIES PLANETARY
GEAR BOX



Acorn Industrial Corporation (AIC for short) is a 100% owned Subsidiary of Changzhou Guomao Lide Transmission Co.,Ltd, the largest indigenous reducer manufacturer in China. For over 30 years, Guomao Lide has become famous for providing the best value and reliability in the drive industry.

Core Products: In its new role, AIC maintains the ability to supply global customers with a wide range of GR, helical-gear, GS helical-worm gear, GK helical-bevel gear, and GF parallel-shaft helical gear motors, along with in-line cycloidal and GX planetary gear reducers.

Capabilities: Moreover, AIC has exceptional engineering capabilities that allow it to provide customized design products such as PV helical gear industry reducers, plastic and rubber special reducers and to also mill special reducers. AIC is proud of having over 100 design engineers on its team and more than 2000 skilled workers to manufacture high-quality products for worldwide market. AIC has the ability to produce most of key components itself and thereby strictly control the quality of these components. To accomplish this, AIC operates nine high-efficiency assembly lines to ensure short lead time and quick response to changing manufacturing requirements.

Market Objectives USA: As a new incomer to the North American market, AIC has developed corporate objectives to create a positive reputation in the mid- to high-end market through a three-stage, long-term investment plan.

Stage I: AIC will focus on the development of a sales and marketing system supported by a comprehensive service network with a goal to have all in place in the next three years.

Stage II: Upon development, AIC will consider building US manufacturing plants to provide enhanced availability and service.

Stage III: Upon successfully developing a positive sales, marketing, parts and service network and begin manufacturing within the United States, the company will then develop a recognized brand based on three critical components...quality, reliability and performance.

We welcome you to our company and our team and look forward to meeting with you to discuss the future.

GF Series Parallel-shaft Helical Gear Motors

Parallel-shaft gear motors are extra slim built to meet situation of limit installation space. They could be considered as the most flexible reducer type which can be installed on all directions to meet kinds of tough conditions. GK series could be easy interchangeable with most common used reducers.

Features:

High Loading Capacity:

Robust cast iron housing and gearing meet up to date international high standards.

Long Operation Life:

High-quality bearing and sealing are selected to provide trouble-free long operation and enhanced leakage-protection, respectively.

Wide Rang Ratio&Low Output Speed:

Multi-stage units (two-stage&threestage) are available.

Technical Data:

Number of Size:

Standard 10 sizes and other multi-stage sizes available;

Power Range:

0.12KW ~ 200KW (0.16HP ~ 268HP) ;

Ratio:

Standardunit 3.77:1 ~ 281.71:1; multi stage unit: 87:1~31434:1;

Output Torque Range:

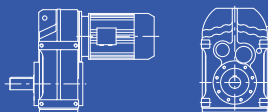
200Nm~18000Nm (1770in-bl ~159433in-bl) ;



Mounted Types

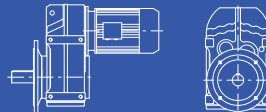
1.Type GF:

Foot mounted. Solid output shaft.



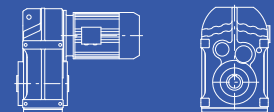
2.Type GFF:

B5 flange mounted. solid output shaft.



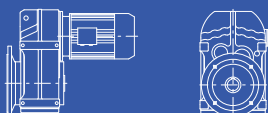
3.Type GFA:

Shaft mounted. Hollow output shaft.



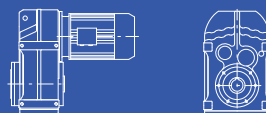
4. Type GFAF:

B5 flange mounted. Hollow output shaft.



5.Type GFAZ:

B14 flange mounted version with hollow shaft.



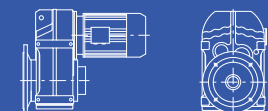
6.Type GFH:

Hollow shaft and shrink disk mounted.



7.Type GFHF:

B5 flange mounted version with hollow shaft and shrink disk .



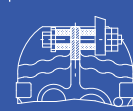
8.Type GFHZ:

B14 flange mounted version with hollow shaft and shrink disk.



9.Type GFAT/GFHT:

As altered type from type GFA /GFH, this type is added torque arm and other accessories .



GK Series Helical-Bevel Gear Motors

GK series product provide a high degree transformation efficiency of nearly 95% at all input speed. In addition to this, its oversized output bearings provide high radial and axial load capacities. They also have a long maintenance-free service life, thus all kinds of motors can be applied in GK series units. They are popular in the hash working conditions industries which need long-term operation daily.

Features:

High Efficiency Up to 95%:

High-precision hardened and grounded gears with high quality gear oil ensure its performance.

Long Service Life:

Infinite life wear free design and oversized bearings on both input and output shafts contributes to long life.

Wide Rang Ratio& Low Output Speed:

Multi-stage units (two-stage&threestage) are available.

Technical Data:

Number of Size:

4 sizes in two-stage units; 12 sizes in three-stage units;

Power Range:

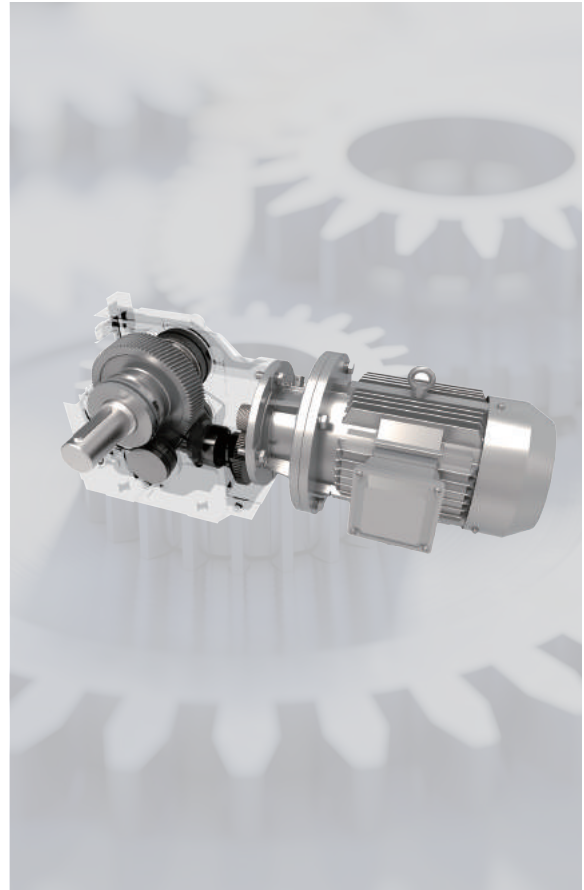
0.12KW ~ 200KW (0.16HP ~ 268HP);

Ratio:

Two-stageunit 3:1 ~ 80:1; Three-stage unit: 5.35:1~222:1; multi stage unit:147:1~17396:1;

Output Torque Range:

Two-stage 80Nm ~ 500Nm (708in-bl ~ 4430in-bl); Three-stage 200Nm~50000Nm (1770in-bl ~ 4430000in-bl);



Mounted Types

1.Type GK:

Foot mounted solid output shaft.



2.Type GKF:

B5 flange-mounted solid output shaft.



3.Type GKA:

Shaft mounted. Hollow output shaft.



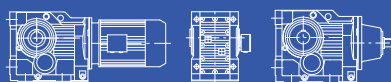
4.Type GKAF:

B5 flange-mounted. Hollow output shaft.



5.Type GKAB/GKHB:

Housings of type GK are used. Hollow output shaft.



6.Type GKAZ:

B14 flange-mounted version with hollow shaft.



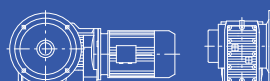
7.Type GKH:

Hollow shaft and shrink disk.



8.Type GKHF:

B5 flange-mounted version with hollow shaft and shrink disk.



9.Type GKHZ:

B14 flange-mounted version with hollow shaft and shrink disk.



GR Series Helical Gear Motors

GR series in-line helical gear motor are designed to meet the requirements of greater output torque ratings, increased power ratings and wider range of ratios. Its convenient installation and dismount design are widely popular in general industrial application.

Features:

Diversity Range of Reduction Ratios:

Three kinds of stage combination are available: single-stage, two-stage and three-stage ensure;

High Loading Capacity:

High strength cast iron or steel welding housing as well as quality gear finished with gas carburizing process and precious grinding;

Long Service Life:

Fits between all the components are closely controlled for optimum performance;

Low Operation Noise:

High-precious machined components, accurate assembly and full-inspection system;

Technical Data:

Number of Size:

7 sizes in single-stage; 14 sizes in multi-stage; Two stages could also be combined to get extremely big ratio.

Power Range:

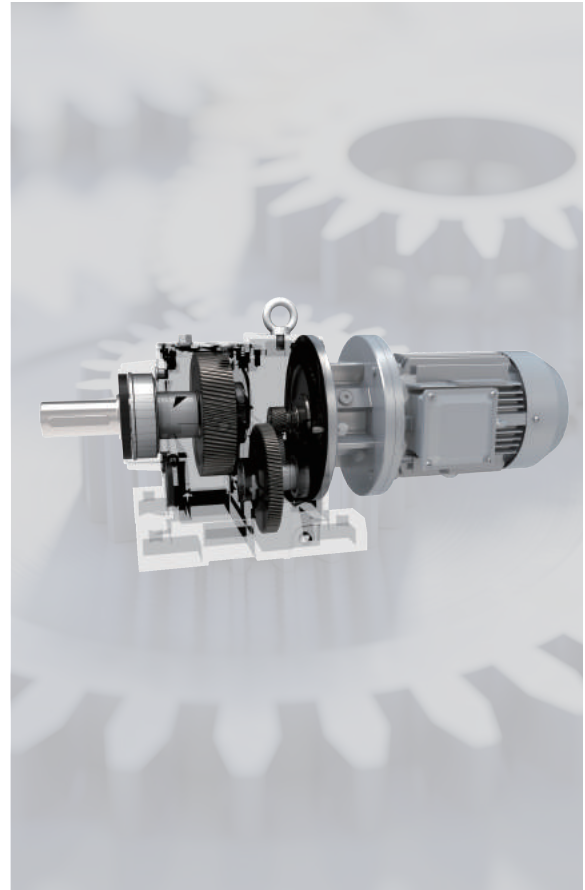
0.12KW ~ 160KW (0.16HP ~ 215HP);

Ratio:

1.5:1 ~ 20000:1

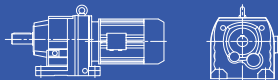
Output Torque Range:

130Nm ~ 36600Nm (1150in-bl ~ 324180in-bl)



Mounted Types

1.Type GR:
Foot mounted units of two or three stages helical gears.



2.Type GRF:
B5 flange mounted units of two or three stages helical gears.



3.Type GRX:
Foot mounted units of single stage helical gears.



4. Type GRXF:
Flange mounted units of single stage helical gears.



5.Type GRM:
Flange mounted helical geared motor with extended bearing housing.



6.Type GR..SZ..AD..:
Input shaft type. As altered type from above mentioned types, it is connected with input shaft, instead of motor.



7.Type GR..R:
Combined types of two different types. Very big ratios are available with these combined units.



GS Series Helical-Worm Gear Motors

GS series gear reducers are the helical/helical-worm combination. Therefore, not only do they have more efficient transmission, they can operate in low noise level. Due to the outstanding performance, they are considered as the ideal cost-optimal solution for simple application in every industrial sector.

Features:

Low Noise Level:

Compact design, high-precision gear/worm hardened and grounded (AGMA 10 or better);

Economical with High Efficiency:

Hardened and grounded steel worm shafts and high capacity bronze alloy worm gears give you the advantages of worm gearing with the efficiency of helical gearing.

High Permit Overhung Loads:

Bearing spans optimized to allow for maximum overhung load capacity, enhanced durability and reliability—while minimizing shaft deflection.

Technical Data:

Number of Size:

standard 8 sizes;

Power Range:

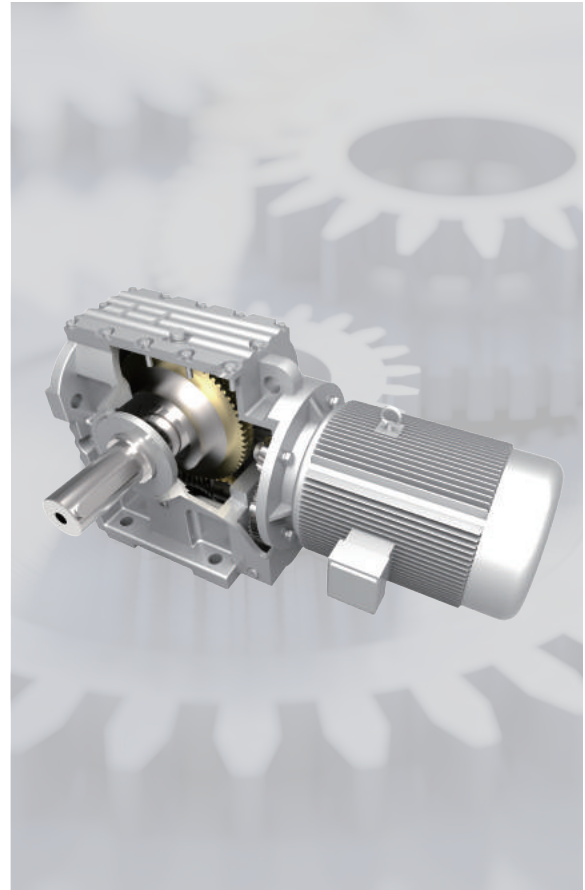
0.12KW ~ 30KW (0.16HP ~ 40HP);

Ratio:

Single Unit 7.6:1 ~ 288:1; Multi stage Unit: 131:1~12901:1;

Output Torque Range:

87Nm ~ 6500Nm (770in-bl ~ 57500in-bl);



Mounted Types

1.Type GS:
Foot-mounted helical-worm gear units with solid shaft.



2.Type GSF:
B5 flange mounted helical-worm gear units with solid shaft.



3.Type GSA:
Helical-worm gear units with hollow shaft.



4.Type GSAF:
B5 flange mounted helical-worm gear units with hollow shaft.



5.Type GSAZ:
B14 flange mounted helical-worm gear units with hollow shaft.



6.Type GSH:
helical-worm geared motor with hollow shaft and shrink disk.



7.Type GSHF:
B5 flange-mounted helical-worm geared motor with hollow shaft and shrink disk.



8.Type GSHZ:
B14 flange-mounted helical-worm geared motor with hollow shaft and shrink disk.



9.Type GSAT/GSHT:
Torque-arm-mounted helical worm gear units with hollow shaft.



Cycloidal Reducer

As the premier in-line drives, the Cycloidal reducers provide quite, efficient and reliable performance. Different from involutetooth gear designs, 67% of the reduction components are in contact all the time, which results in Cyclo's special advantages in industrial application.

Features:

Wide Ratio Range:

One-stage, two-stage and three stage units are available to reach wide range of ratios.

High-Efficiency:

Rolling motion minimizes friction and wear, reducing heat, resulting in a 95% efficiency rating per stage.

High Load Capacity:

500% shock load capability as there are only compressive forces rather than shear forces on the tooth

Long Operation Life:

Low speed of cycloidal wheel results in minimal reflected inertia, less wear, and extremely long service life

Technical Data:

Number of Size:

30 sizes in all three kinds of stage;

Power Range:

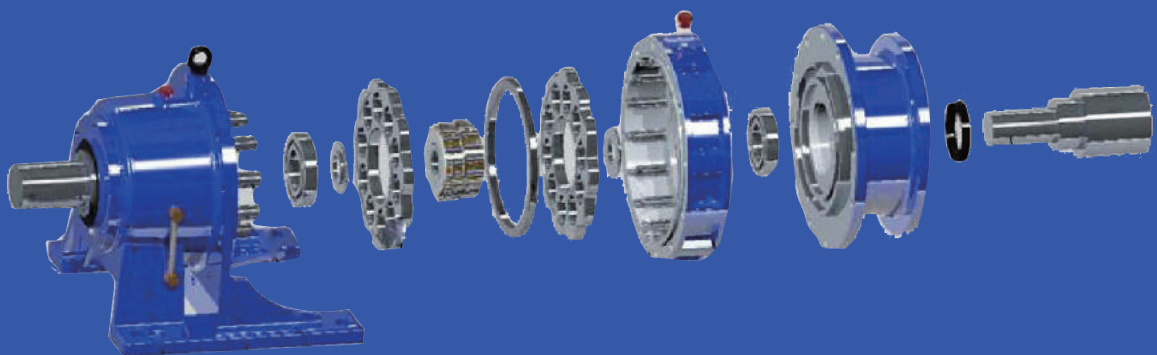
0.12KW ~ 90KW (0.16HP ~ 122HP);

Ratio:

1.3:1~33000:1;

Output Torque Range:

30Nm~29400Nm (265in-bl ~ 260400in-bl);



GMLX(S), GMY(X)&MBJ Special Mill Reducer

All of GMLX(S), GMY(X) and MBJ mill reducer are special design for cement production line in construction industry and coal powder production line in heat-energy plant as well as metallurgical industry, but also can be applied in other heavy industry sections. These self-design reducer series have been authorized as standard equipment by Chinese National Construction Industry Committee.

Common Features:

- Transfer Power smoothly and steadily.
- High loading capacity due to high-standard gear machining, hardening and grinding;
- Free-maintenance Operation as quality components are applied;
- The performance is monitoring by Electrical equipment;
- Low noise, light weight and high efficient;

Technical Data:

GMLY(S)

Number of Size: 27 sizes in two kinds of types which are two-stage bevel-planetary gearing and three-stage helical-bevel-planetary gearing.

Power range:

Ratio:

Output Torque Range:

GMY(X)

Number of Size: 9 sizes in GMY Two-stage reduction coaxial out type; 9 sizes in GMYX three-stage planetary-coaxial out type;

Power range:

Ratio:

Output Torque Range:

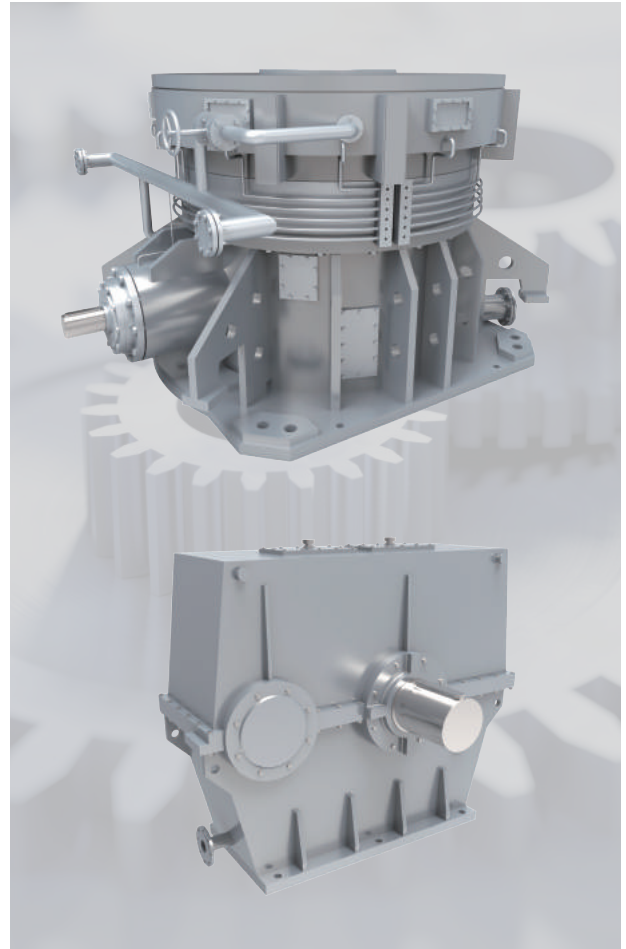
MBJ

Number of Size: 20 sizes in GMY Two-stage reduction coaxial out type; 9 sizes in GMYX three-stage planetary-coaxial out type;

Power range:

Ratio:

Output Torque Range:



PV Series Universal Gear Box

PV parallel-helical/helical-bevel industrial gear units are especially excellent due to their high level of availability, quality and attractive price-performance ratio. Since PV came into market, it is widely acknowledged by machinery and equipment manufactures.



Features:

Ingenious Modular Design	1) Modular design lead to various of sizes with a less variety of components; 2) Reliable running performance and high power transfer capacity due to ingenious structure design;
Customized Mounting Position	Horizontal or vertical installation is alternative. Other arrangements are also possible on request:
Long Service Life	High-precious machined components, accurate fitting and correct size selection can ensure the PV' s operating lift to reach 35000 hours.
Low Noise	All key transformation components are finished buy precisely machining, grinding and gear modification. PV units are 100% performance test before sending out.

Technical Data:

Power Range: 4KW ~ 6000KW (5.44HP ~ 8136HP);

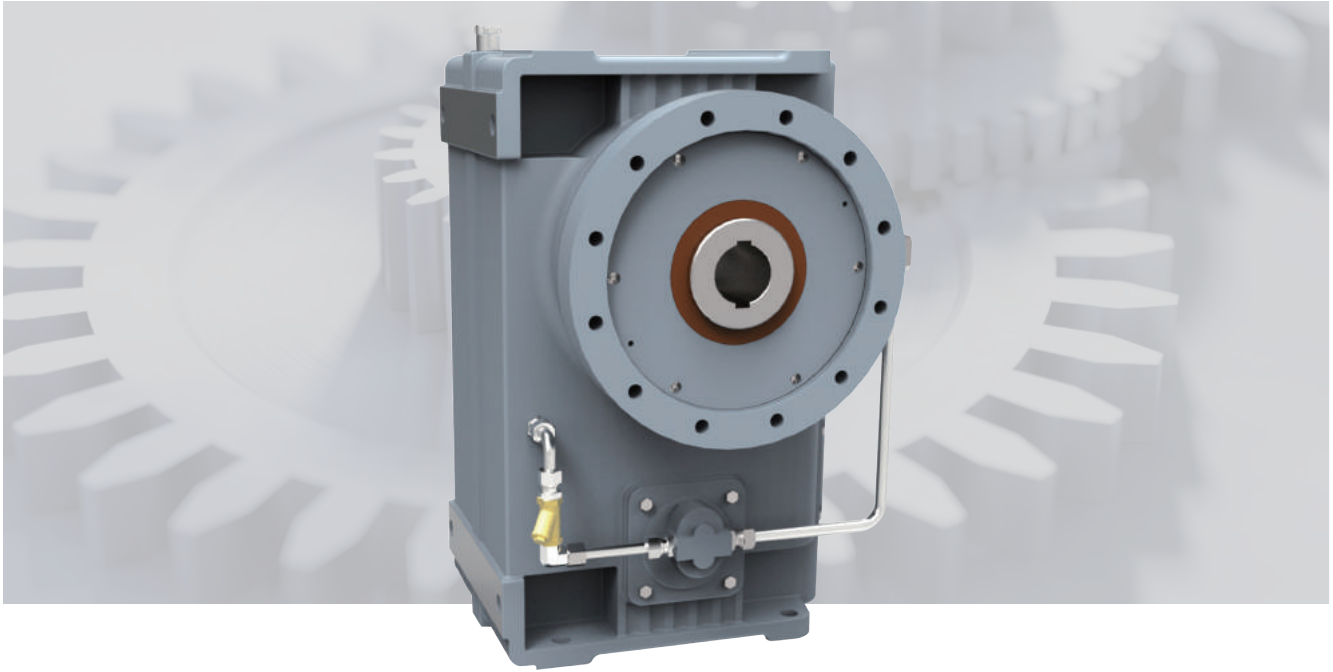
Ratio: 1.25:1 ~ 450:1

Output Torque Range: top to 9500000Nm (84145000in-bl);

ZLYJ Plastic and Rubber Special Reducer

ZLYJ/ZSYJ

Series reducer is a kind of high-precision rigid gear assembly with thrust block specially designed for the plastic/rubber screw extruder. The gearbox employs the high-strength low-carbon alloy steel for gears and shafts, with tooth flank carburized, quenched and ground, to meet the gear precision AMG 10 and hardness of tooth flank HRC54~62.



Feature:

- The complete machine is featured with compact structure, high bearing capacity, stable transmission, low noise, high efficiency, etc.
- The housing through optimization design, high strength casting material, design a large stiffness and has good noise and cooling characteristic
- A huge thrust bearing is mounted at the front end of the hollow output shaft to bear the axial thrust from the screw during working.
- The transmission structure of the reducer: Included two-stage drive (ZLYJ series) and three-stage transmission structure (ZSYJ series)
- Mounting type of the reducer: suitable for foot mounted and vertical mounted

Technical Data:

Number of Size: Customization Design

Power Range: 5.5KW ~ 200KW (7.5HP ~ 272HP);

Ratio: 8:1 ~ 35:1

Output Torque Range: top to 42000Nm (372,0100in-bl);

GX Series Planetary Gear Box

GX planetary gearing, with its inherent in-line shafting and cylindrical casing, is often recognized as the compact alternative to standard pinion-and-gear reducers.

Being suited for a wide range of applications – from small hoist to bulldozer power trains – these units are strong contenders when space and weight versus reduction and torque are chief concerns.

APPLICATIONS Construction equipment

Door & gate openers

Food & beverage mixers

Material handling equipment

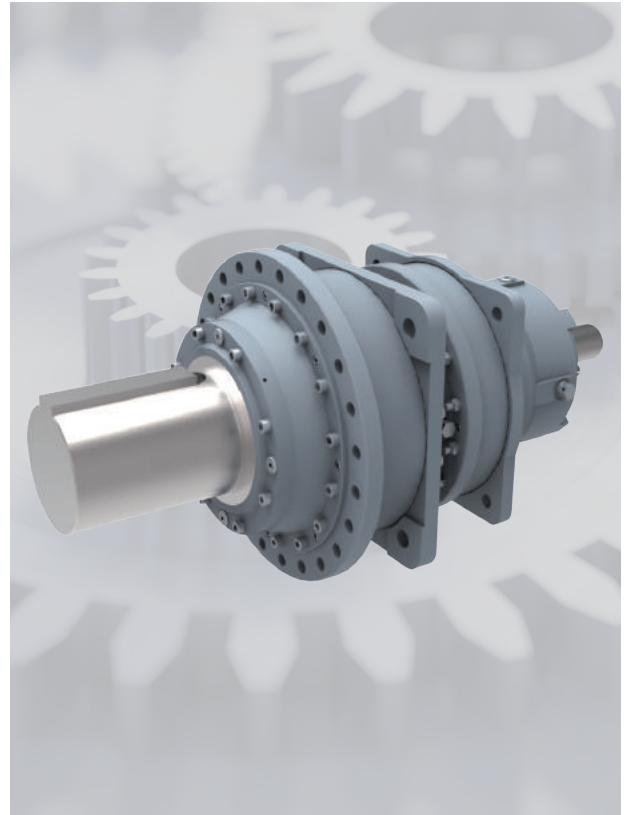
Medical devices

Packaging equipment

Power tools

Vehicle transmissions

Wind generation



Features:

<p>High Torque Capacity in Compact Package</p>	<p>Due to the load sharing of several planet gears, planetary gear reducers can handle the same torque that a larger parallel axis gear set can take.</p>
<p>High Efficiency</p>	<p>A single stage of planetary gears will likely be over 95 percent efficient.</p>
<p>High Torsional Stiffness</p>	<p>Since the sun gear will likely contact multiple planet gears, the torsional stiffness, or resistance to elastic deformation, is higher in a planetary gear set than parallel axis gear set;</p>
<p>Lubrication Flexibility</p>	<p>Planetary gear sets may be lubricated with either oil or grease. The gears within a planetary set prevent grease from escaping.</p>

Technical Data:

Number of Size: 37 Sizes and Combination of GX and Helical Gear box is available;

Power Range: 0.37KW ~ 50000KW (0.5HP ~ 68000HP);

Ratio: 3.15:1 ~ 4000:1

Output Torque Range: top to 2,600,000Nm (23,029,229in-lb)